

2018 Boston Whaler

190 MONTAUK

## 190 Montauk – 19MTK Current Model

- L.O.A.: 19' 4" (5.89 M)
- BEAM: 8' (2.43 M)
- DRAFT: 13" (0.33 M)
- WEIGHT (DRY, NO ENGINE): 2,000 LBS (907 KG)
- WEIGHT (WITH ENGINES, FUEL AND WATER, IF APPLICABLE): 2,769 LBS (1,256 KG)
- MAXIMUM WEIGHT CAPACITY: 2,500 LBS (1,134 KG)
- SWAMPED CAPACITY: 4,000 LBS (1,814 KG)
- PERSONS CAPACITY: 8
- MAXIMUM HORSEPOWER: 150 HP (112 KW)
- MINIMUM HORSEPOWER: 115 HP (86 KW)
- MAXIMUM ENGINE WEIGHT: 530 LBS (240 KG)
- DEADRISE AT TRANSOM: 16
- TRANSOM HEIGHT: 25" (0.63 M)
- FUEL CAPACITY: 60 GALLONS (227 L)
- BRIDGE CLEARANCE (NO TOP): 60" (1.52 M)
- BRIDGE CLEARANCE (WITH SUNTOP): 87" (2.20 M)
- BRIDGE CLEARANCE (WITH T-TOP): 90" (2.28 M)
- BRIDGE CLEARANCE (ON TRAILER WITH T-TOP): 126" (3.2M)

## 190 Montauk – 190MT Past Model

- L.O.A.: 19' (5.79 M)
- BEAM: 8' (2.43 M)
- DRAFT: 12" (0.30 M)
- WEIGHT (DRY, NO ENGINE): 1,900 LBS (862 KG)
- MAXIMUM WEIGHT CAPACITY: 2,500 LBS (1,134 KG)
- WEIGHT (WITH ENGINES, FUEL AND WATER, IF APPLICABLE): 2,668 LBS. (1,210 KG)
- SWAMPED CAPACITY: 4,200 LBS (1,905 KG)
- HEIGHT (KEEL TO HIGHEST POINT): 5' 11.5"
- HEIGHT (LOWEST TIP UNDERWATER GEAR, IN DOWN POSITION, TO TOP OF WINDSHIELD/HARDTOP): 7' 3"
- PERSONS CAPACITY: 8
- MAXIMUM HORSEPOWER: 150 HP (112 KW)
- MINIMUM HORSEPOWER: 90 HP (67 KW)
- DEADRISE AT TRANSOM: 16
- FUEL CAPACITY :60 GALLONS (227 L)
- MAXIMUM ENGINE WEIGHT: 530 LBS (240 KG)
- TRANSOM HEIGHT: 25" (0.63 M)
- LIVEWELL VOLUME: 14 GALLONS (52.9 L)(OPTIONAL)
- BRIDGE CLEARANCE (NO TOP): 5' 0" (1.52 M)
- BRIDGE CLEARANCE (WITH SUN-TOP): 7' 2" (2.18 M)
- PACKAGE BOAT SPECS (WITH TRAILER/ENGINE UP): 23' 6"L X 8' 5"W X 8' 0"H
- EUROPEAN CERTIFICATION:C

# 190 MONTAUK



Reimagined classic.



Capability.



Purposeful simplicity.



*Handwritten signature and date: 9/3/16*

## 2018 Montauk

# 190 MONTAUK

Standard rod holders

New console with a larger flat for electronics

Large fishbox storage



Transom storage with fiberglass lids

Teak Boarding Steps:  
Teak package includes these plus swim ladder teak

Improved speaker locations

## What's New...?

---

# 190 MONTAUK



This data is internal to Brunswick.

---

# 190 MONTAUK



---

# 190 MONTAUK



---

## 190 MONTAUK



**Optional powder-coated t-top with five rod holders and storage bag**

---

## 190 MONTAUK

# High Rail

**Standard**

Note, only full hull colors are being produced in MY22



---

# 190 MONTAUK

**Optional low profile bow rail deletes standard high rail**



**Shown with standard aft rail**

---

## 190 MONTAUK

**Depicted with optional low profile  
bow and stern rails selected**

**\*\*Note: the "Complete Rail Package" can be  
selected which will be comprised of both high  
and low rails fore and aft.**



---

## 190 MONTAUK

**Shown with optional split bow rail and standard aft rails.**



# Bow Chock

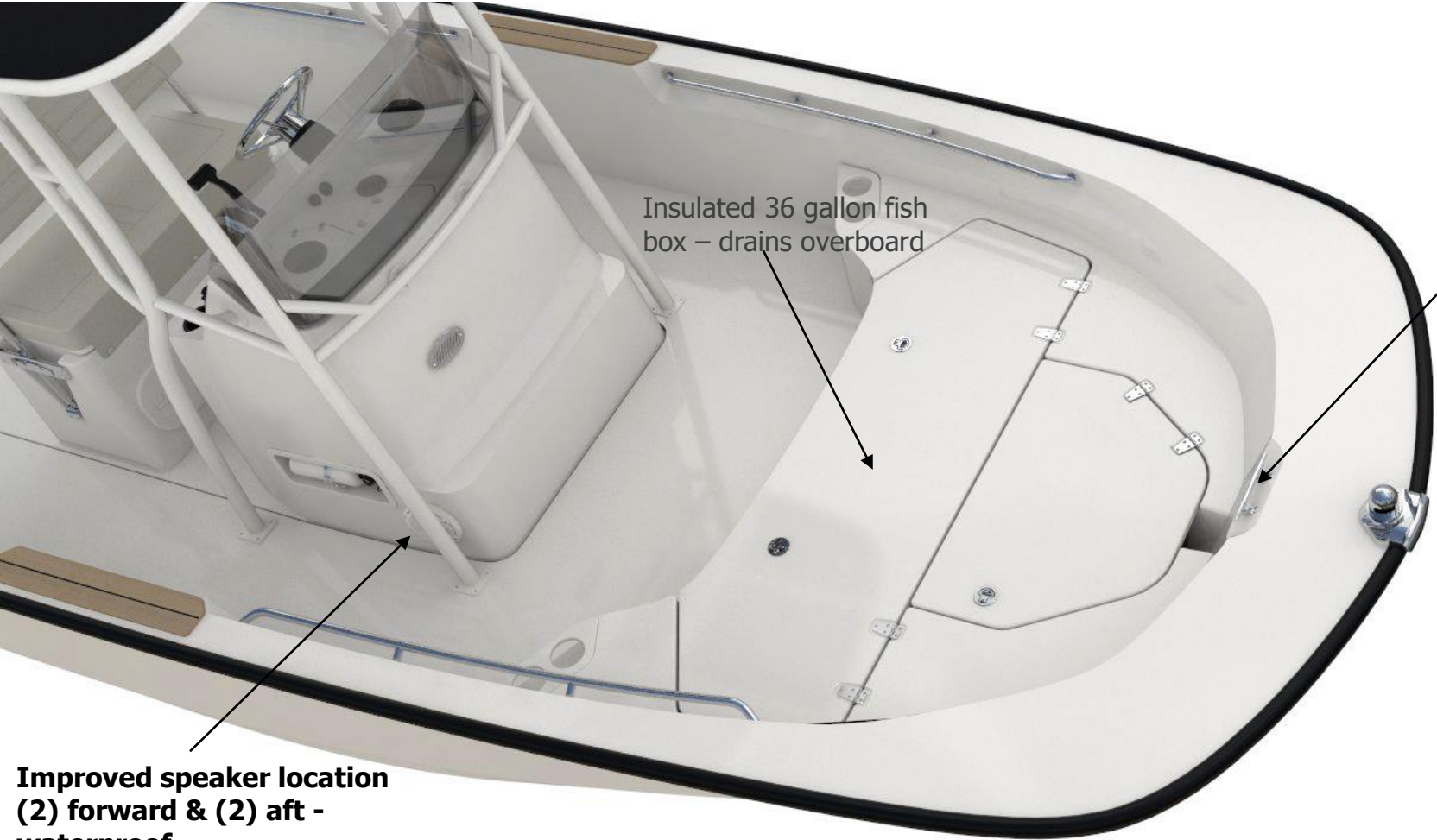
**Functional design guides and holds  
your lines**

**Heritage styling**

**LED navigation lights**



# Standard Bow



Insulated 36 gallon fish box – drains overboard

**Stainless steel cleat**

**Improved speaker location  
(2) forward & (2) aft -  
waterproof**

# Sun Lounge Option

\*\* Not compatible with  
fishing package / cooler  
seat \*\*



Bow cushion with fabric  
hinge makes entry to  
anchor locker and  
fishbox easier

# Bow Cushion Option

\*\* included in sun lounge option \*\*



Optional teak boarding step

# Fishing Package Option

Note: the console mounted rod holders have been deleted because of t-top



**72 qt. cooler with cushion, backrest, console mounted rod holders (4) and tackle drawer**

**New console with larger flat for electronics**



Fully featured console face



---

# 190 MONTAUK

## Accented dash face





Steering  
Wheel Logo

---

## 190 MONTAUK

---

**Improved speaker location  
(2) forward & (2) aft -  
waterproof**

# Reversible Pilot Seat



---

## 190 MONTAUK



Front 3/4



Optional Livewell



Standard Storage

---

## 190 MONTAUK

---

**Transom storage with fiberglass lids**



**Teak package option  
which also includes teak  
boarding steps**

---

## 190 MONTAUK



Optional aft seating with removable backrests and base cushions

---

190 MONTAUK



Optional powder coated tow arch

# Hull Colors

Light Blue



Glacier Green



Desert Tan



Light Grey



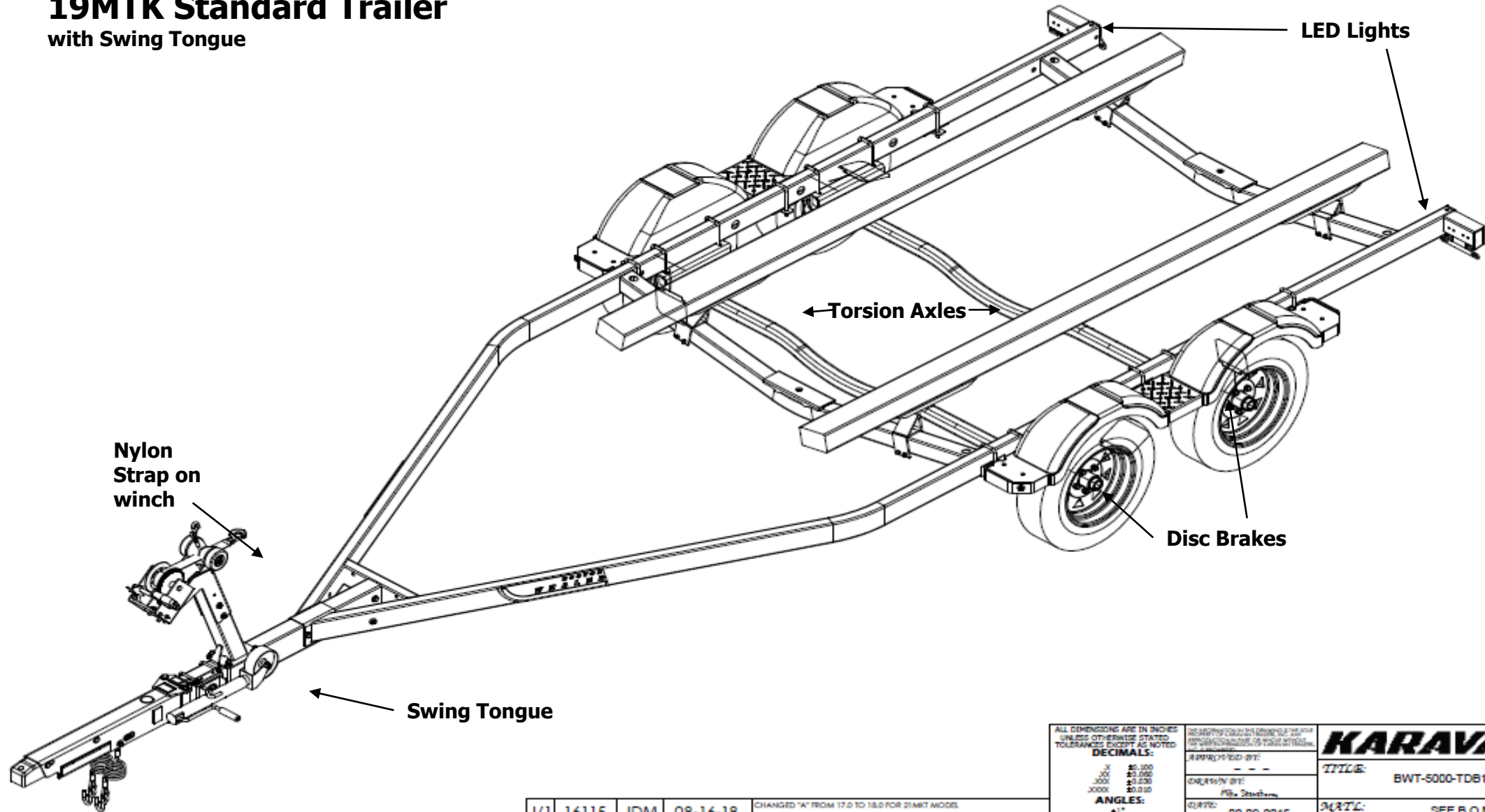
Note: Only full hull colors are being produced in MY22

**NEW GRAPHICS OPTION - CHROME LOGO WITH SILVER MODEL DESIGNATOR/HARPOON**



*BOSTON*   
**WHALER** 

**19MTK Standard Trailer**  
with Swing Tongue



J/1	16115	JDM	08-16-18	CHANGED "A" FROM 17.0 TO 18.0 FOR 21MTK MODEL
-----	-------	-----	----------	---

ALL DIMENSIONS ARE IN INCHES UNLESS OTHERWISE STATED TOLERANCES EXCEPT AS NOTED	
<b>DECIMALS:</b>	
.5	±0.010
.001	±0.002
.002	±0.003
.005	±0.005
<b>ANGLES:</b>	
±1°	

<b>KARAVAN</b>	
<b>TITLE:</b>	BWT-5000-TD810-78-ST
<b>DATE:</b>	02-09-2015
<b>MATL:</b>	SEE B.O.M.

# 190 Montauk: Notable Features

- A brand new boat from boat to stern
- Standard rod holders
- Transom storage with fiberglass lids which can be converted into aft seating with a removeable backrest and cushion
- 2 Leaning Post configurations
  - STD reversible pilot seat with storage
  - Reversible pilot seat with 25 gallon livewell
- New console with a larger flat for electronics
- Yeti cooler available as individual option
- Stereo option now comes with four high quality waterproof JL Audio 6.5" speakers
- All new bow/stern rail options
- Large insulated fishbox / storage compartment forward
- T-top/Tow Arch when optioned will be powder coated
- Teak package which includes boarding steps & swim ladder step
- Same hull colors and configurations as the 17/15 Montauk

2018 Boston Whaler

190 MONTAUK